

SEMINAR CONNECT-IN

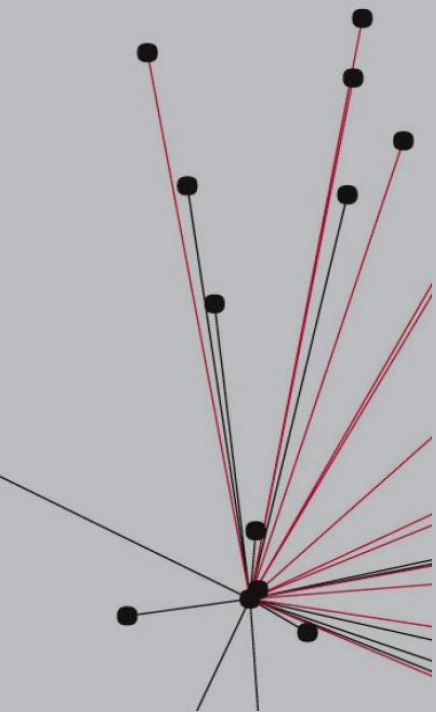
WS 2017/18

CONNECT IN: Communicating Architecture

Today's architectural projects aim transdisciplinarity, a way to holistically – across many disciplines – study problems and propose solutions with added value.

Communicating Architecture is where students learn how to prepare *Descriptive Reports* that properly explain to other disciplines the social aspects and technical complexities of a project.

Along the course, the student will learn how to recognize and gather important socio-cultural facts that influence the project and describe technicalities from outsourced disciplines.



SEMINAR CONNECT-IN

WS 2017/18

FIRST MEETING OCTOBER 16
ROOM 201A 10:00

- 1_ MEP WORKSHOP
- 2_ SCHEMATIC DESIGN SUBMISSION
- 3_ ARCHITECTURAL DESIGN
- 4_ CONSTRUCTION PLANS REVISION
 - I_ ARCHITECTURAL DETAIL PLANS
 - II_ MEP PLANS



Nickl & Partner

SEMINAR CONNECT-IN

WS 2017/18

- 1_ MEP WORKSHOP (NOV 3, 4)
- 2_ SCHEMATIC DESIGN SUBMISSION
- 3_ ARCHITECTURAL DESIGN
- 4_ CONSTRUCTION PLANS REVISION
 - I_ ARCHITECTURAL DETAIL PLANS
 - II_ MEP PLANS



Nickl & Partner

SEMINAR CONNECT-IN

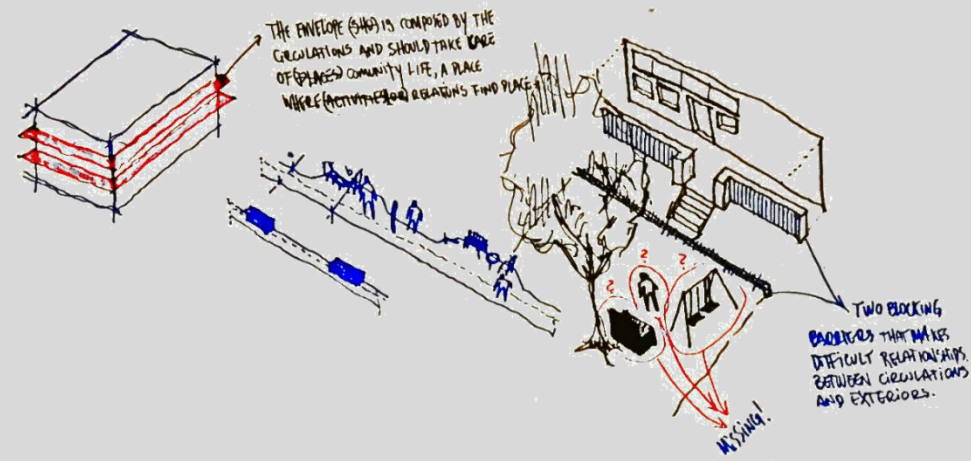
WS 2017/18

1_ MEP WORKSHOP

2_ SCHEMATIC DESIGN SUBMISSION (NOV 27)

3_ ARCHITECTURAL DESIGN

4_ CONSTRUCTION PLANS REVISION
I_ ARCHITECTURAL DETAIL PLANS
II_ MEP PLANS



SEMINAR CONNECT-IN

WS 2017/18

- 1_ MEP WORKSHOP
- 2_ SCHEMATIC DESIGN SUBMISSION
- 3_ ARCHITECTURAL DESIGN (DEC 11)
- 4_ CONSTRUCTION PLANS REVISION
 - I_ ARCHITECTURAL DETAIL PLANS
 - II_ MEP PLANS



SEMINAR CONNECT-IN

WS 2017/18

1_ MEP WORKSHOP

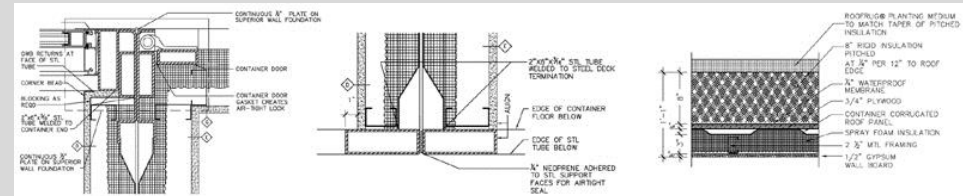
2_ SCHEMATIC DESIGN SUBMISSION

3_ ARCHITECTURAL DESIGN

4_ CONSTRUCTION PLANS REVISION (JAN 8)

I_ ARCHITECTURAL DETAIL PLANS

II_ MEP PLANS



SEMINAR CONNECT-IN

WS 2017/18

2018 | FEBRUARY 5

5_ CONSTR. DOCUMENTS SUBMISSION

I_ ARCHI + MEP DETAILED PLANS

II_ ARCHI + MEP MEMORIES

III_ MEASUREMENTS & QUANTITIES

SEMINAR

W/ OFFICE-BASED ENVIRONMENT



Nickl & Partner

ARCHITECTURE FOR HEALTH

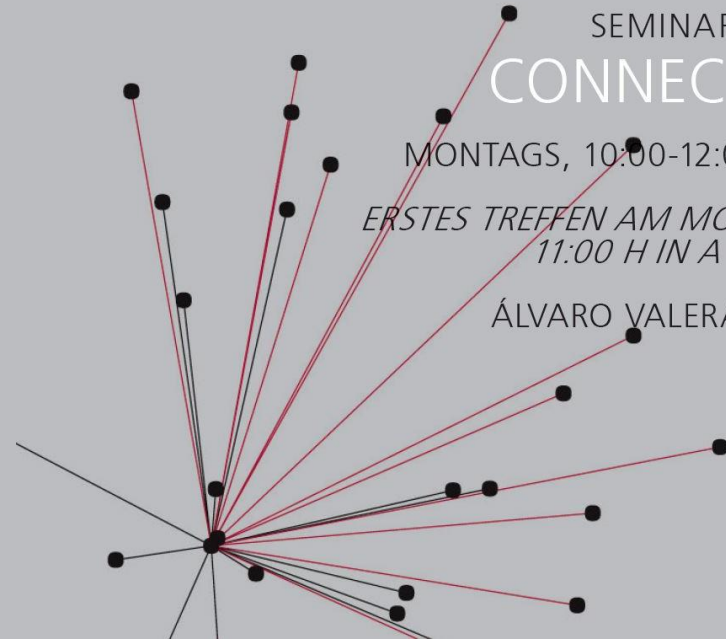
SEMINAR

CONNECT-IN

MONTAGS, 10:00-12:00 IN A 201A

*ERSTES TREFFEN AM MONTAG, 16.10.17,
11:00 H IN A 203!*

ÁLVARO VALERA SOSA



SEMINAR CONNECT-IN

WS 2017/18

| 2017

| 2018

NOV 3,4,27	DEC 11	JAN 8	FEB 5
1_ MEP WORKSHOP	3_ ARCHITECTURAL DESIGN	4_ CONSTRUCTION PLANS • ARCH DETAIL PLANS • MEP PLANS	5_ CONSTRUCTION DOCUMENTS • ARCHI + MEP DETAILED PLANS • ARCHI + MEP MEMORIES • MEASUREMENTS & QUANTITIES
2_ SCHEMATIC DESIGN			

SEMINAR CONNECT-IN

WS 2017/18

2017 | MONDAY OCTOBER 16, 10:00 AM

FIRST MEETING
ROOM 201A

ALVARO VALERA SOSA
a.valera-sosa@healthcare-tub.com